

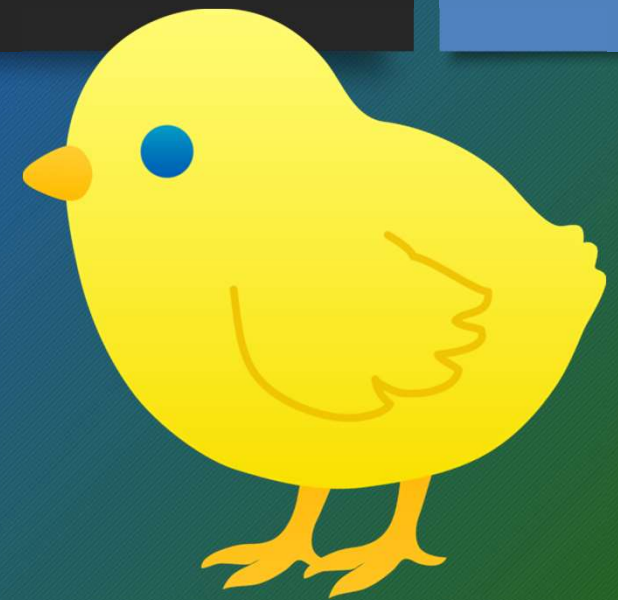
Incubator Rental and Care of Newborn Livestock Guide

Goffle Road Poultry Farm
549 Goffle Road, Wyckoff, NJ 07481
Phone: (201) 444-3238
www.gofflepoultry.com



Roadmap

- This presentation will cover how to...
 - Handle preincubated eggs after pickup
 - Prepare an incubator
 - Set eggs and care for eggs while incubating
 - Get ready for hatching
 - When to remove hatched chicks
 - Prepare to return rental equipment
 - Care for baby livestock



If you have rented an incubator from us before, please review the entire packet before starting, as our instructions may have changed.

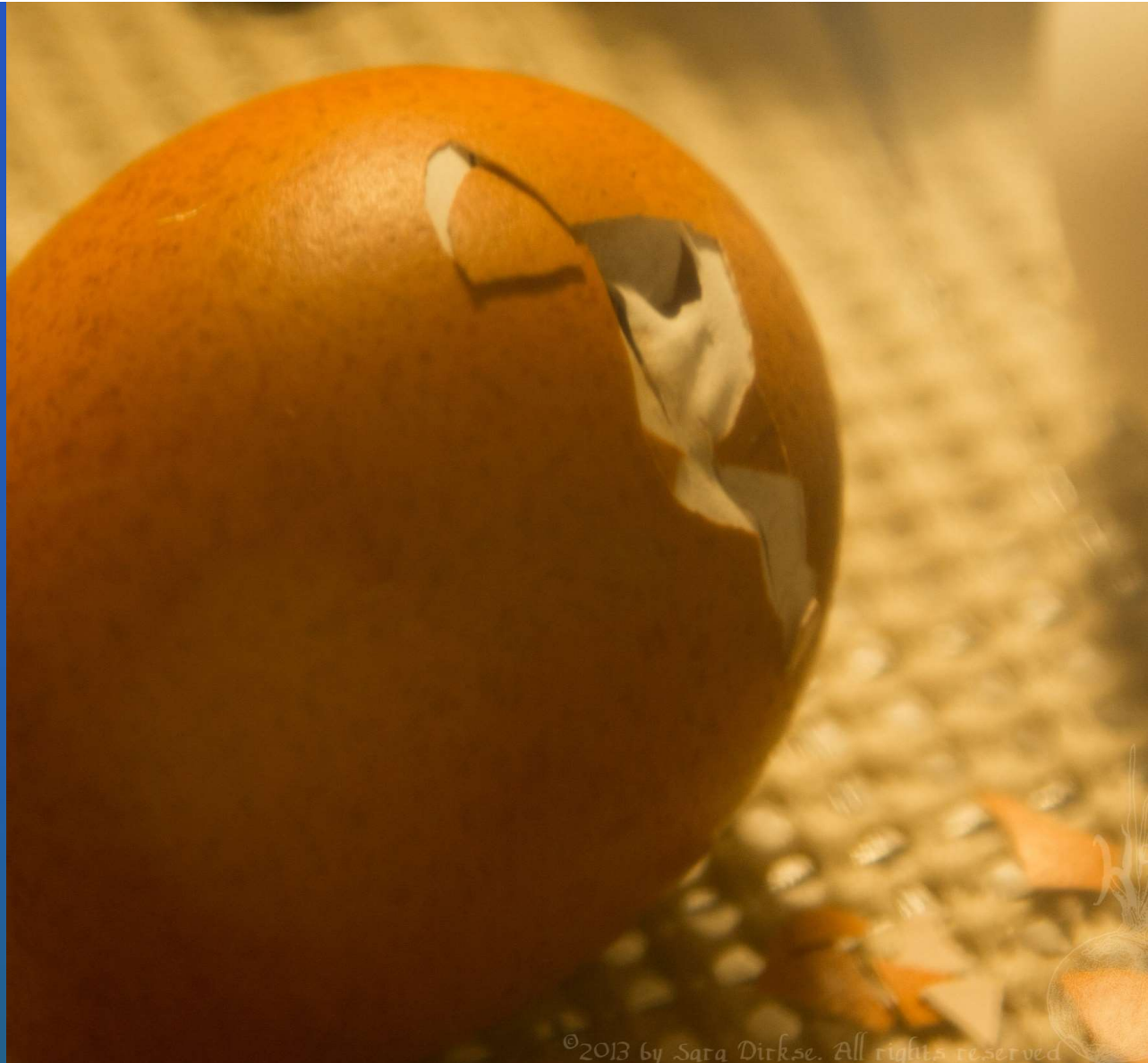
Notes to Parents, Teachers, and Education Staff

3

- If incubating in a school or public setting...
 - Make a note for any personnel who have access to your room after hours to LEAVE THE INCUBATOR UNDISTURBED AND PLUGGED IN AT ALL TIMES.
- Avoid moving the incubator after setting the eggs to prevent accidental breakage
- Hatching eggs is a science. Though unfortunate, there are uncontrollable factors that can cause a project to fail, and you should be prepared for a possibility where no eggs hatch.

Section 1: Incubation and Hatching

Note: This section is customized for customers of Goffle Poultry's incubator rental program and may differ from the manufacturer's recommendations.



Planning for a Hatch Date

5

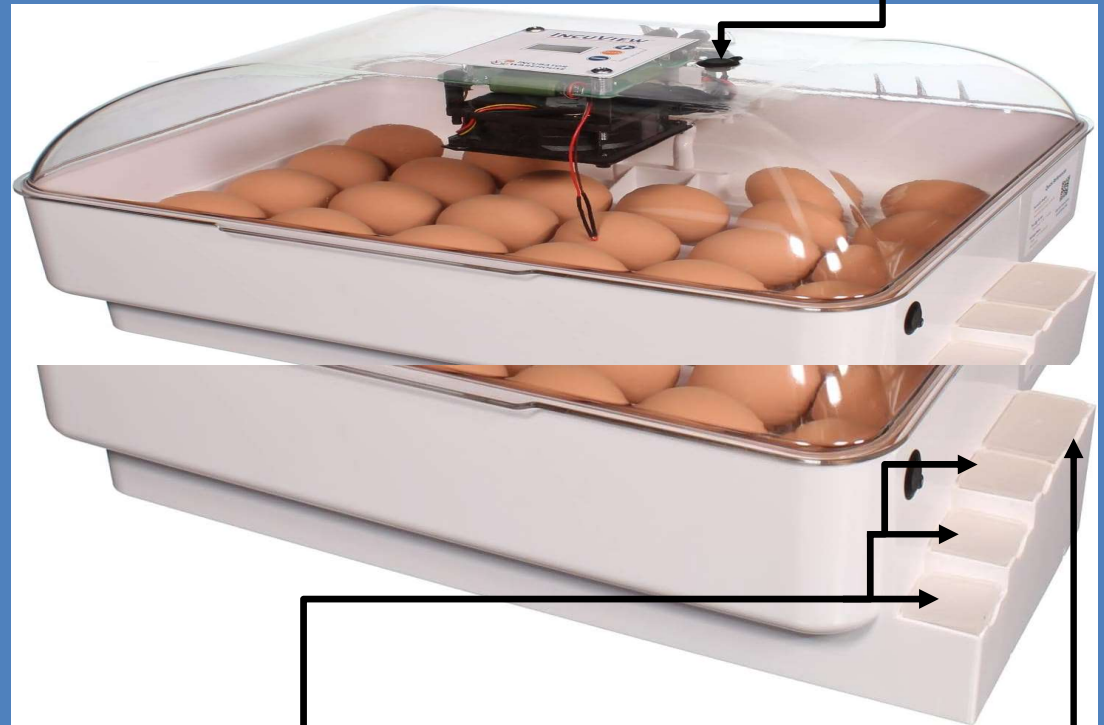
- Pre-incubated eggs are set to hatch on Thursdays.
 - They may start a day earlier on Wednesday, or a day late on Friday



Incubator Placement

- The location of the incubator is vital to a successful operation
 - Keep in a room between 70-80° F
 - Keep away from doors, windows, or away from drafty areas
 - Keep out of direct sunlight
 - Keep the incubator level and on a flat table or desk
 - Do not keep on a floor or near a vent

6
Before starting, double check if there is scotch tape over the top vent. You will want to remove this for your project.



Open water caps to check water level. Keep closed after viewing.

Pour water into rectangular cap reservoir. See next page for instructions

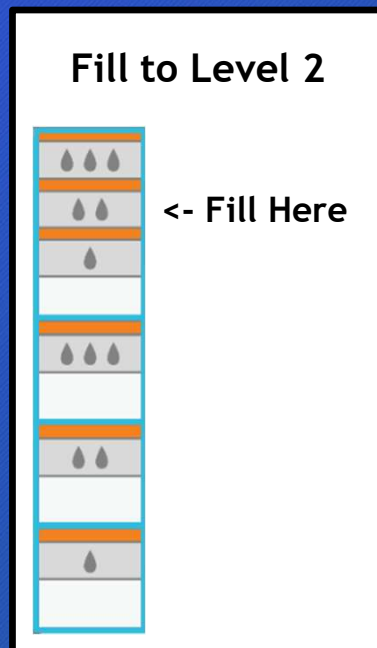
Prepping the Incubator

7

- It is best practice to get the incubator set up and ready with 3 hours of picking up the eggs
 - Plug the incubator into a power source to get it warmed up as fast as possible
 - Remove the tape from the vent hole on the top of the incubator to allow fresh air for the chicks to breathe
 - Fill the water reservoir to level 2

Setting up the Water Reservoir

8



- Three days before the eggs are due to hatch, the incubator turner is programmed to stop turning the eggs
- Fill up to level 2 with room temperature water
 - Humidity should rise to approximately 60-80%
 - This will soften the shells of the eggs, allowing the chick to break out of their shells
- Refill water as necessary for the next 5 days until all chicks have broken out of their shells

Setting the Eggs

9

- Open the lid and set the eggs like below
 - When opening the lid, you may hear a “snap” sound. This is sound of the lid locking in place, and is normal

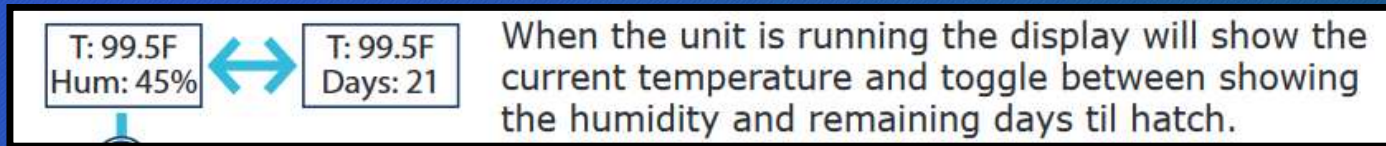
Setting Eggs

When setting the eggs inside the turning tray it is important to align the eggs parallel to the channels to ensure proper turning.
Note: Eggs may roll end over end or “walk” in the turning tray. This is acceptable and imitates how eggs are turned in nature. If the eggs become bunched simply spread them back out.



Monitoring Temperature and Humidity

10



- Rental incubators will be pre-set to 99.5° F by Goffle Poultry
 - When first starting up the incubator, it will take a little time to stabilize. It is best to keep the pre-incubated eggs in the incubator during this process
- **DO NOT UNPLUG INCUBATOR AFTER STARTING PROJECT**
 - The incubators are designed to remain powered on until the end of the project; unplugging them can cause complications with hatching

Setting the Hatch Date

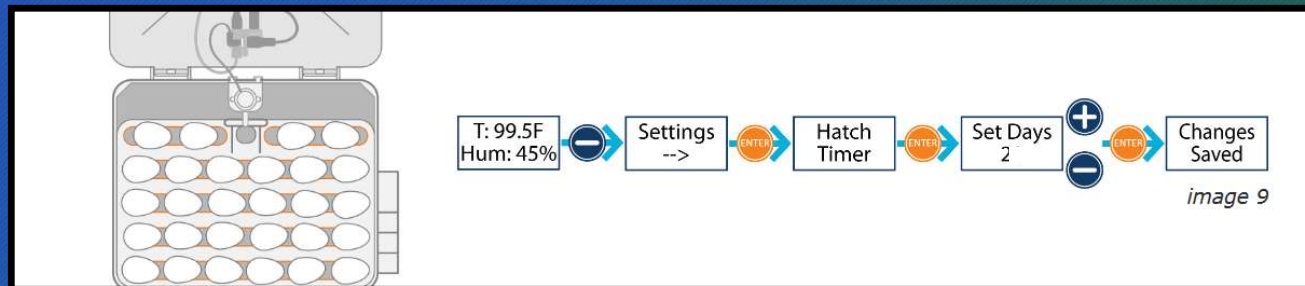
11



Once all eggs are set, please follow the instructions in the image below and set hatch timer to 2 days

This is important, because the turner will not move when set to day 3 or earlier

If the incubator is powered off, the hatch timer is saved to memory and will not decrease until the incubator is powered back on



Do not adjust the other settings in the incubator

If you believe the incubator may be set up incorrectly or is not behaving as expected, please contact Goffle Poultry for support

Day 0: Hatching Begins

12

- On or near the hatch date, you may notice the eggs starting to pip (the first break of the eggshell)
- When chicks begin to hatch, do not assist them in breaking the shell
- Once hatched, do not remove chicks from incubator immediately
 - They will be wet, and may take between 12-48 hours to dry off inside the incubator



This chick is beginning to break out of their shell. It may take up 48 hours to fully break free



This chick was successful in breaking out of its shell

Moving Chicks to a Brooder

13

This chick is dry and ready to leave incubator



This chick is still wet and should stay in the incubator a little longer



- Once dry, you may move the chicks to a brooder
 - A brooder is a warm and dry area for the baby chicks
 - If you purchase a care package, the box it came in is intended to be used for the first few weeks of life. Remove the contents and layer the bottom with provided bedding.
 - The brooder should always have access to food and water
 - The brooder should have a heat source available
 - A silver reflector clamp light with a 60+ watt incandescent light bulb is sufficient
 - Mount it to the top to avoid contact with the chicks. Aim it towards one corner of the box, allowing the newborns to move in and out of the heat as necessary
- The next section covers care of newborn livestock

Cleaning the Incubator

14

- When the chicks are finished hatching and removed from the incubator, you may begin cleaning
- Discard any eggshells or unhatched eggs
- Use warm soapy water to rinse the bottom half of the incubator, turner, and liner so no foreign objects are left
 - The top half of the incubator does not need to be rinsed as it contains electrical components that can be damaged by water
- When finished, leave the lid open to dry. Once dry, it can be safely closed



The incubator is full of broken shells after the hatch

End of Incubation Section

- This concludes the incubation section of this presentation
- The next section details how to care for newborn livestock



Section 2:
Care of Newborn
Livestock



Setting up a Brooder: Bedding

17

A brooder is a warm and dry area for the baby chicks

- The care package comes in a box that works as a brooder box for the first few weeks of life
- The brooder should have easy access to food and water
- The care package also includes a water dish, a bag of food, and a bag of bedding

Layer the bottom of the box with bedding

- Change the bedding whenever it gets soiled or has an odor
- The box should last between 1-2 weeks before it should be thrown away. By then, you should have a new box or anything reusable like a plastic tub or large glass fish tank which can be cleaned



Overhead example of a brooder box

Setting up a Brooder: Food and Water

18

- Set the food in any bowl with a low-lip that chicks can reach into.
- To set up the water bottle, fill up the water to the top, then screw on the lid.
 - Turn over the bottle quickly, and it will refill itself if there is water in the bottle.
- Make sure to place the food and water in a corner of the brooder.
- Water and food should always be available.



An example of a low-lip food dish

Making a Brooder Box: Part 3

19

- The brooder should have a heat source available
 - If kept indoors, A silver reflector clamp light with an incandescent light bulb of 60 watt or greater
 - It should be mounted to the top of the box and aimed at the opposite corner away from the food and water allowing the newborns to move in and out of warmth as needed
 - The clamp light and incandescent light bulb is not included as part of the care package; it can be purchased separately
 - Otherwise, you may use one from your basement or garage if it has the correct light bulb



A silver reflector clamp light



Examples of incandescent bulb.

Fluorescent and LED bulbs do not provide enough heat for baby chicks.

Keeping Warm

20



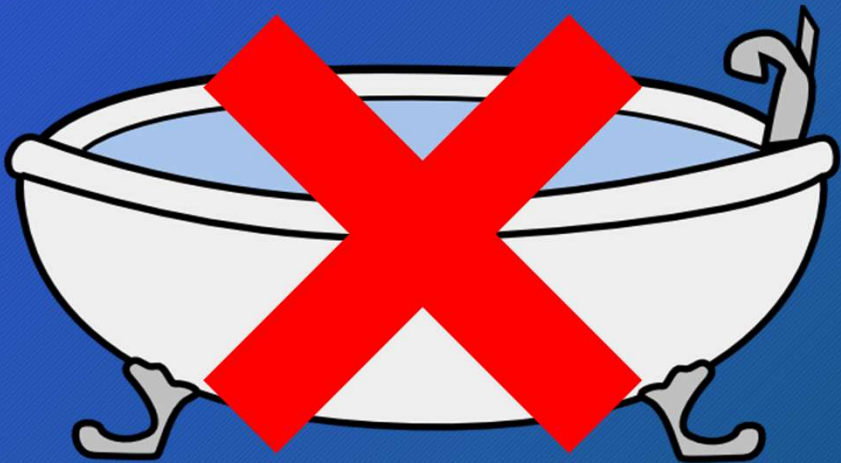
This chick is enjoying the warmth

- New born livestock requires these temperatures during growth periods:
 - Week 1 - above 90° F
 - Week 2 - above 80° F
 - Week 3 - above 70° F
- The newborns will travel under or away from the heat source as its temperature reaches comfort level
- If you notice the chicks are cold and huddled together, try placing the clamp light closer to the surface of the box
- Alternatively, if the chicks are spending most of their time away from the light, it usually means they are too hot; try moving the clamp light away from the surface of the box

Health and Safety

21

- Do not bathe or put baby chicks into a full bathtub or sink
 - The chicks are still young, and could start chilling when they get below comfort temperatures



- When handling baby livestock, wash your hands afterwards with soap and water to prevent transmission of bacteria
- Keep children under supervision when handling baby livestock
- Avoid handling livestock near one's face or mouth



Closing

- If you have any questions, you can reach us at (201)444-3238, and we will do our best to answer your questions
- Thank you for reading and we hope you enjoy your project

